

Threaded plugs

Steel / Stainless Steel, with conical thread

SPECIFICATION

Types

- Type **A**: without micro encapsulation
- Type **GPC**: with micro encapsulation

Version in Steel ST

- ultrasonically and tensile tested
- zinc plated, blue passivated

Version in Stainless Steel AISI 303 NI

Thread coating GPC

Precote 5 (see page A25)



INFORMATION

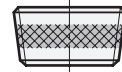
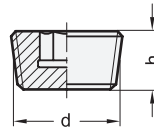
Threaded plugs DIN 906 are used to close bore holes with cylindrical internal thread.

The tightness depends on the medium, pressure, temperature and material pairing. The design with GPC thread coating provides a higher degree of safety.

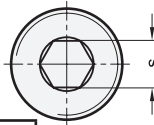
The official DIN 906 standard sheet also provides for thread sizes M33x2; M38x1.5; M39x2; M52x1.5; M52x2; M56x2 and M60x2.

TECHNICAL INFORMATION

- Stainless Steel characteristics (see page A26)



Pressure tightness with thread coating GPC (Precote 5)



* Complete with type index of the Threaded plugs

- | | |
|-----------------------------|--------------------------|
| A | GPC |
| without micro encapsulation | with micro encapsulation |

DIN 906

| Description | d | h | s | ⚖️ |
|----------------------|------------|----|----|-----|
| DIN 906-ST-M6x1-* | M 6 x 1 | 6 | 3 | 2 |
| DIN 906-ST-M8x1-* | M 8 x 1 | 8 | 4 | 2 |
| DIN 906-ST-M10x1-* | M 10 x 1 | 8 | 5 | 3 |
| DIN 906-ST-M12x1,5-* | M 12 x 1.5 | 10 | 6 | 6 |
| DIN 906-ST-M14x1,5-* | M 14 x 1.5 | 10 | 7 | 8 |
| DIN 906-ST-M16x1,5-* | M 16 x 1.5 | 10 | 8 | 10 |
| DIN 906-ST-M18x1,5-* | M 18 x 1.5 | 10 | 8 | 14 |
| DIN 906-ST-M20x1,5-* | M 20 x 1.5 | 10 | 10 | 17 |
| DIN 906-ST-M22x1,5-* | M 22 x 1.5 | 10 | 10 | 22 |
| DIN 906-ST-M24x1,5-* | M 24 x 1.5 | 12 | 12 | 30 |
| DIN 906-ST-M26x1,5-* | M 26 x 1.5 | 12 | 12 | 37 |
| DIN 906-ST-M30x1,5-* | M 30 x 1.5 | 12 | 17 | 45 |
| DIN 906-ST-M36x1,5-* | M 36 x 1.5 | 15 | 19 | 86 |
| DIN 906-ST-M42x1,5-* | M 42 x 1.5 | 18 | 22 | 142 |
| DIN 906-ST-M45x1,5-* | M 45 x 1.5 | 18 | 22 | 163 |
| DIN 906-ST-M48x1,5-* | M 48 x 1.5 | 20 | 24 | 210 |
| DIN 906-ST-R1/8-* | R 1/8 | 8 | 5 | 3 |
| DIN 906-ST-R1/4-* | R 1/4 | 10 | 7 | 7 |
| DIN 906-ST-R3/8-* | R 3/8 | 10 | 8 | 12 |
| DIN 906-ST-R1/2-* | R 1/2 | 10 | 10 | 19 |
| DIN 906-ST-R3/4-* | R 3/4 | 12 | 12 | 37 |
| DIN 906-ST-R1-* | R 1 | 12 | 17 | 57 |
| DIN 906-ST-R11/4-* | R 11/4 | 18 | 22 | 133 |
| DIN 906-ST-R11/2-* | R 11/2 | 20 | 24 | 200 |

Weight A

* Complete with type index of the Threaded plugs

- | | |
|-----------------------------|--------------------------|
| A | GPC |
| without micro encapsulation | with micro encapsulation |

DIN 906-NI

STAINLESS STEEL

| Description | d | h | s | ⚖️ |
|----------------------|------------|----|----|----|
| DIN 906-NI-M6x1-* | M 6 x 1 | 6 | 3 | 2 |
| DIN 906-NI-M8x1-* | M 8 x 1 | 8 | 4 | 2 |
| DIN 906-NI-M10x1-* | M 10 x 1 | 8 | 5 | 4 |
| DIN 906-NI-M12x1,5-* | M 12 x 1.5 | 10 | 6 | 6 |
| DIN 906-NI-M14x1,5-* | M 14 x 1.5 | 10 | 7 | 9 |
| DIN 906-NI-M16x1,5-* | M 16 x 1.5 | 10 | 8 | 11 |
| DIN 906-NI-M18x1,5-* | M 18 x 1.5 | 10 | 8 | 15 |
| DIN 906-NI-M20x1,5-* | M 20 x 1.5 | 10 | 10 | 19 |
| DIN 906-NI-M22x1,5-* | M 22 x 1.5 | 10 | 10 | 23 |
| DIN 906-NI-M24x1,5-* | M 24 x 1.5 | 12 | 12 | 33 |
| DIN 906-NI-R1/8-* | R 1/8 | 8 | 5 | 3 |
| DIN 906-NI-R1/4-* | R 1/4 | 10 | 7 | 7 |
| DIN 906-NI-R3/8-* | R 3/8 | 10 | 8 | 12 |
| DIN 906-NI-R1/2-* | R 1/2 | 10 | 10 | 18 |
| DIN 906-NI-R3/4-* | R 3/4 | 12 | 12 | 39 |
| DIN 906-NI-R1-* | R 1 | 12 | 17 | 63 |

Weight A